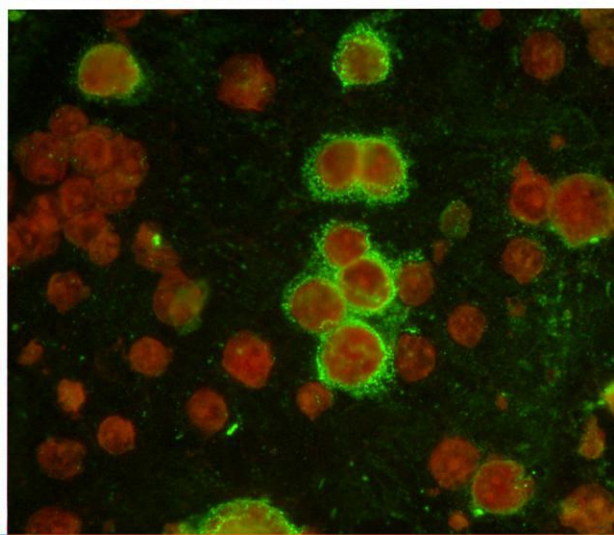
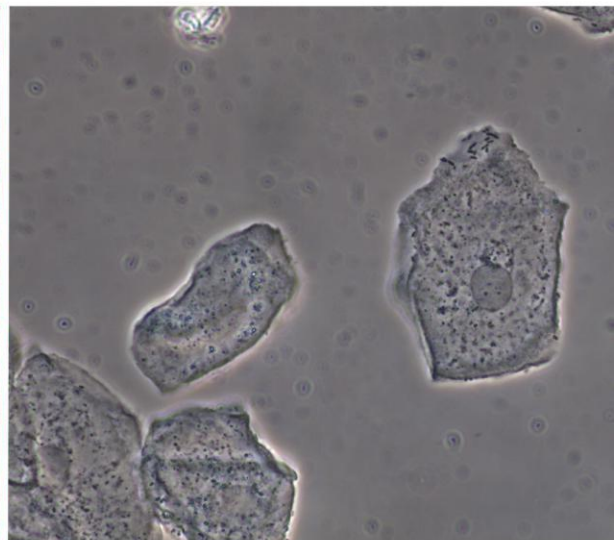
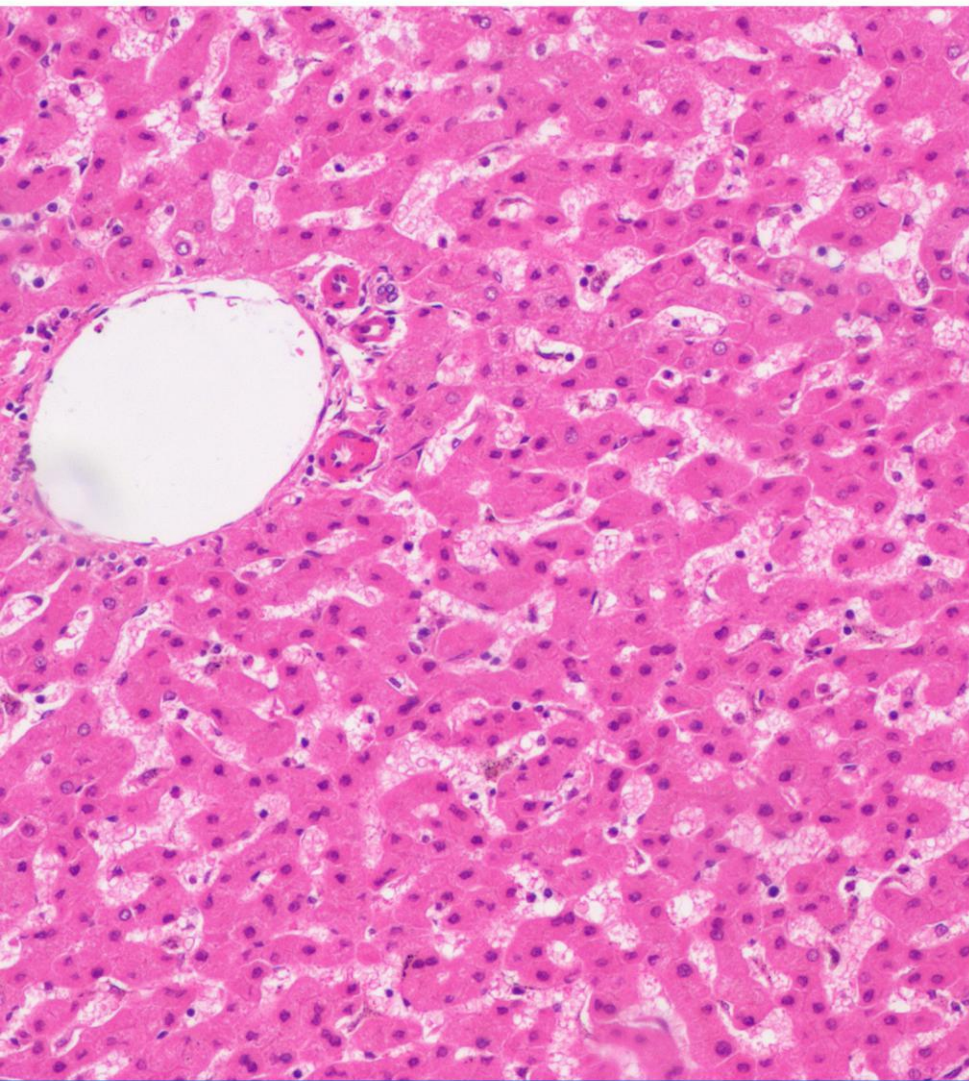


Intelligent Imaging for Great Discoveries



- ◆ 6.3 Megapixels high resolution

MICROSCOPY IMAGING EXPERT



## Microscope camera

MS60 microscope camera adopts high performance ISP image processing sensor, special optimization for microscope imaging, accurate reproduction fine details and real color.

### Features:

- 6.3MP high resolution
- Superior image sensor
- Real color reproduction
- 71fps under full resolution



# MS60-2

## Specification

Item	MS60-2	Spectral	380 - 650nm
Effective resolution	6.3 Megapixels	A/D convert	12bit
Sensor size	1/1.8"	Image cache	128Mb
Pixel size	2.4μm × 2.4μm	Trigger	Software
Frame rate	3072 × 2048      71FPS	Exposure	Manual / Auto / Zone
	1536 × 1024(BIN2)    89FPS	White balance	Auto WB / One push / Zone
	1920 × 1080(1080P)   166FPS	Image format	TIF,BMP,JPG,RAW
	1280 × 720(720P)    178FPS	Software port	DirectShow / TWAIN
	Any size of ROI	OS	Windows XP 32bit; Windows 7/8/10 32/64bit
Scanning mode	Progress / continuous	Data port	USB3.0 B type, 5Gb/s
Shutter	Electronic rolling shutter	Camera port	C-mount
Exposure time	6μs - 7s	Surrounding	Temperature: 0 - 50°C; Humidity: 10% - 90%RH
Effective gain	1x - 16x	Size	Ø76mm × 62mm

