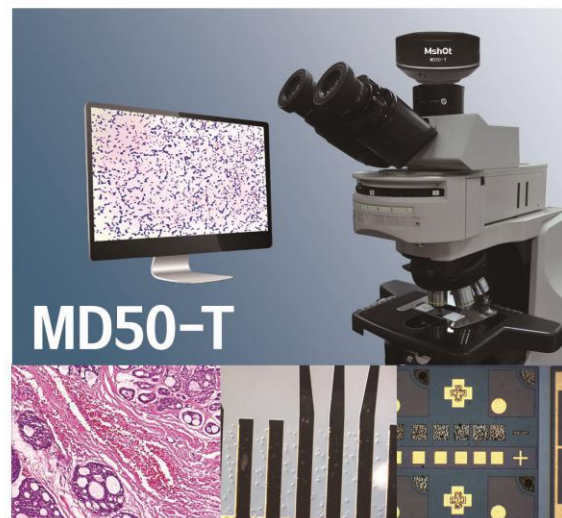
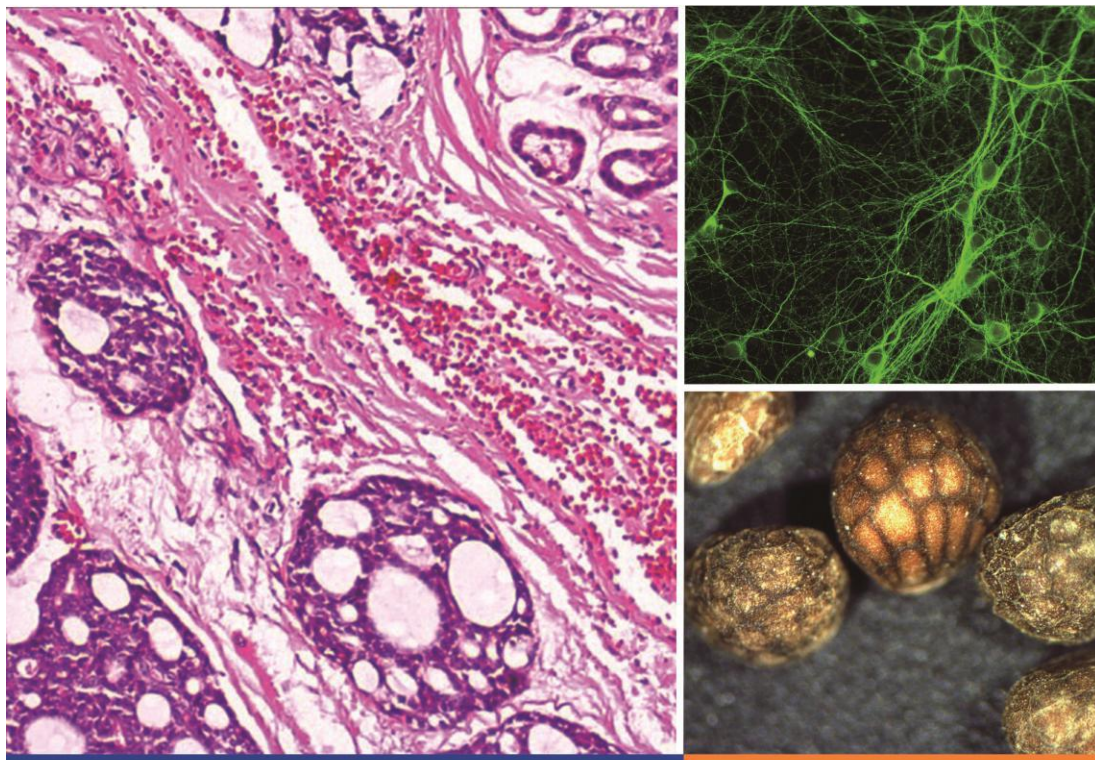


Intelligent Imaging for Great Discoveries



## Microscope Camera

MD50-T camera supports TWAIN and DirectShow software port, compatible with Windows OS, suitable for industry checking, microimaging, high speed image capture, medical, science and education.

### Features:

- 500 Megapixels
- USB3.0 data port, high speed
- Well compatibility and stable

## Specification

Item	MD50-T	Exposure time	109μs - 3s	
Effective megapixels	500 megapixels	Spectral response	380nm - 650nm	
Sensor size	1/2.5"	A/D convert	8Bit/12Bit optional	
Pixel size	2.2μm×2.2μm	Trigger mode	Software trigger	
Frame rate	2592 × 1944	14fps	Exposure	Manual / auto / zone
	1920 × 1080	31fps	White balance	Auto/ one push / zone
	1024 × 760	63fps	Image format	TIF, BMP, JPG, RAW
	1280 × 960 (SUM)	34fps	Software port	DirectShow / TWAIN
	1280 × 960 (BIN)	34fps	SDK	Support SDK secondary development
	640 × 480 (SUM)	86fps	Operating OS	Windows XP 32Bit; Windows 7/8/10 32/64Bit
	640 × 480 (BIN)	86fps	Data port	USB3.0 Btype port
Sensitivity	1.76V/Lux-sec	Camera port	C-mount	
Active size	5.7mm(H) × 4.28mm(V)	Working surrounding	Temperature: 0~50°C; Humidity: 10%~90%RH	
Scanning mode	Progress/continuous	Shell size	Ø76×48.7mm	
Shutter	Electronic shutter			

◆ 500 Megapixels



USB2.0 Camera

Guangzhou Micro-shot Optical Technology Co. Ltd

Address : Room 506, Lobby A, Vanke Cloud / 1933 Huaguan Road, Guangzhou / 510640 China  
 WEB: <http://www.m-shot.com> / Email: [sales@m-shot.com](mailto:sales@m-shot.com) / Telephone: 0086-20-38262481

