

MI-LED Series LED Fluorescence Illumination



MI-LED is a fluorescence illuminator in LED light source, it is used to upgrade inverted biological microscope to fluorescence microscope. Special with built-in color LED lamps and module design, the illuminator is well fit to Olympus inverted microscope for live cell. On purpose of user friendly, the products is lightweight and small volume. Combine light source, filter sets in one unit.

Features

- Compact design of all in one unit
- Continuously adjustable brightness with rotatable knob
- No need preheating or cooling, open to use
- Accurate controlling of different color lighting
- One-stop operation of light source synchronous switching with filter groups
- No required of external or added power supply
- Safety, environment friendly and human friendly
- Coated precision-cast aluminium with vented design
- CE, FCC, EMC, EU, ISO certified

Applications:

- Embryology
- IVF
- Genetics Andrology
- Cell biology
- Neuroscience
- Sperm analysis



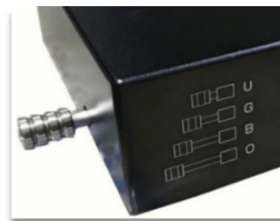
Brightness control
Continuous
Rotatable



AC connector
Low power
Energy saving
Electrical safety



Vented design
Heat dissipation
Durable



Laser printing mark
Accuracy lever
One stop operation
Various observation



Qualified filters
Well manufactured cube
Precision cast

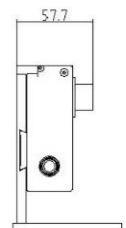
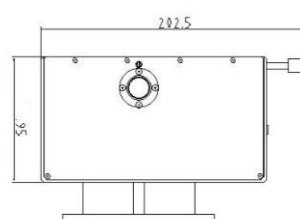


Olympus CX41



Olympus CKX53

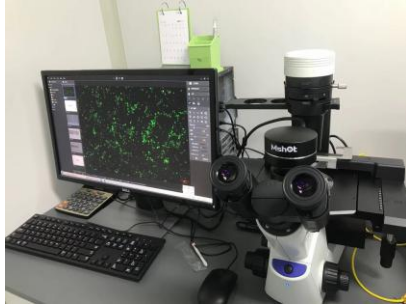
Dimension: unit mm



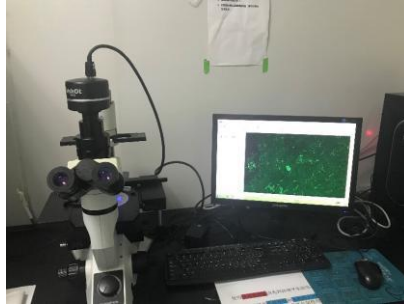
Specification

Item No.	LED lamps	Filter Groups	Compatible microscopes		
MI-BG-LED	Blue and Green/yellow	Blue and Green/Yellow	Olympus CKX41 Olympus CX53		
MI-BGU-LED	Blue, Green/Yellow and UV	Blue, Green/Yellow and UV	Olympus IX50/70 Olympus IX51/71 Olympus IX53/73		
Standard configuration					
Model	LED lamp	Filter wavelength			Mainly Applied Fluorochrome
		Excitation filter	Dichroic mirror	Emission filter	
B	Blue	480/30nm	505nmLP	535/40nm	GFP/ FITC /EGFP/ Malaria / Alexa 488 / Cy2@/Fluo-4 / FluorX@ / Fluoro-Jade
G	Green	540/25nm	565nmLP	605/55nm	PI / EB / EH /TRITC
	Yellow	560/40nm	600nmLP	610nmLP	Mcherry/TexasRed/Alexa Fluor 594
U	UV	350/50nm	400nmLP	460/50nm	DAPI/Alexa 350/Hoechst 33342&33258 /AMCA/ AMCA-X
Remark*	Olympus CX41 UV excitation only can be long-pass filter				
Light source	Blue &UV: 3W LED cold lamp for each filter group Green: 6W LED cold lamp for each filter group Yellow: 5W LED cold lamp for each filter group				
Observation	Fluorescence Bright field & phase contrast by microscope original lighting				
Operation	Lever : B, G, UV/O				
Power control	Rota-table knob, continuously adjustable brightness				
Input power	DC 12V 2A				
Shell	High rigid precision-cast aluminium with coating and vents				
Light baffle	Orange color plastic light baffle				
Optional lamp and filters					
LED	Filter type	Excitation filter	Dichroic mirror	Emission filter	Remark
Blue	Long-pass	480/40nm	505nmLP	520nmLP	Olympus CX41 UV excitation only can be long-pass filter
Green	Long-pass	530/40nm	570nmLP	590nmLP	
Yellow	Band-pass	560/40nm	600nmLP	635/60nm	
UV	Long-pass	360/50nm	400nmLP	420nmLP	
Violet	Long-pass	400/40nm	430nmLP	460nmLP	

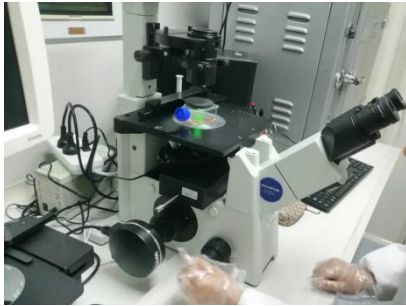
Cases



Olympus CXK53



Olympus CX41



Olympus IX51



Olympus IX71



Olympus IX73

Sample images

