

MF31-RB Fluorescence Microscope



MF31 series fluorescence microscope adopting excellent quality infinity optical system combined with LED fluorescence illuminator. The LED fluorescence system is modular design, does not need external power box, it can offer royal blue fluorescence excitation. The microscope is good for entry level fluorescence observation such as immunofluorescence and bio-fluorescence, and bright field of biological slide, especially tuberculosis stained by Auramine O. It is easy to operate, environment protect and high safety, widely used at school, university lab, medical center and science research institute.

Features

- Bright field and fluorescence
- 100% light division for eyepiece or PC
- FN22 wide field eyepiece with high eyepoint
- Workable for royal blue fluorescence excitation
- 3W LED light for fluorescence
- 5W LED light for transmitted light color temperature around 4300K
- Microscope stage with graphene surface, slide holder can hold double pieces slides at one time
- Start to use with no preheating or cooling
- Move among different color fluorescence and bright field by lever
- With out external power box or lamp box, all in one design
- Can expand to polarizing function, add thermal stage.

Applications

- Tuberculosis sputum slide quick diagnose
- Respiratory disease diagnose
- Immunofluorescence
- Auramine O
- Water quality detection
- Food safety control
- Coating material analysis
- Botany
- Education



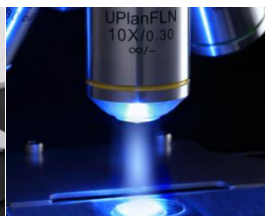
High quality objectives



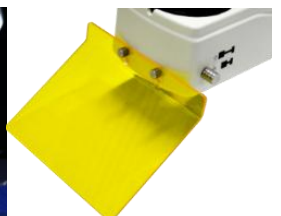
White cold LED light



Big slider holder



Epi-LED fluorescence



Light barrier protect eyes

MF31-RB standard configuration is with single Blue LED fluorescence excitation

Items	Specification
Optical system	Infinity optical system
Observation tube	Trinocular tube, triple lever 30°inclined; Pupil distance 53~75mm
Eyepiece	WF10X/FN22mm
Fluorescence illumination system	3W Royal blue LED EF:420-480nm /DM:>500nm /BF:>510nm
Nosepiece	Quadruple nosepiece with backward
Infinity plan Achromatic objective	10x/0.25
	20X/0.4 (no cover glass)
	40x/0.65 (no cover glass)
	100x/1.25
Mechanical stage	Double layer moving stage, Graphene surface, Sizes: 210x140mm; moving range:76x50mm
Focusing system	Fine and coarse adjustment with tension and limited stopper, 2um scale, coarse adjustment circle moving range 40mm, fine adjusting circle moving range 0.2mm
	Total moving range: 24mm
Abbe Condenser	NA.1.25, Built-in aperture diaphragm
Transmission Illumination system	5W white LED , brightness adjustable
Camera interface	0.5x C-mount
Operating environment	Temperature: 5~40℃ (41~104°F), Max. Relative humidity 80%, 31℃
Power Source	AC, 100-240V, 50~60Hz

Optional MF31 Items

Items	Fluorescence excitation
MF31-B	Blue :EX 460~490nm/ DM>500nm/ EF>510nm
MF31-UV	UV: EF 330~380nm/ DM>400nm/ EF>420nm
MF31-BG	Blue: EF 460-490nm / DM>500nm / BF>510nm Green:EF 510~550nm/ DM>570nm/ BF>590nm
MF31-BGU	Blue: EF 460-490nm / DM>500nm / BF>510nm Green:EF 510~550nm/ DM>570nm/ BF>590nm UV: EF 330~380nm/ DM>400nm/ EF>420nm
MF31-BGU-TRITC	Blue: EF 460-490nm / DM>500nm / BF>510nm Green:EF 510~550nm/ DM>570nm/ BF>590nm (works for TRITC/mCherry/TexasRed) UV: EF 330~380nm/ DM>400nm/ EF>420nm