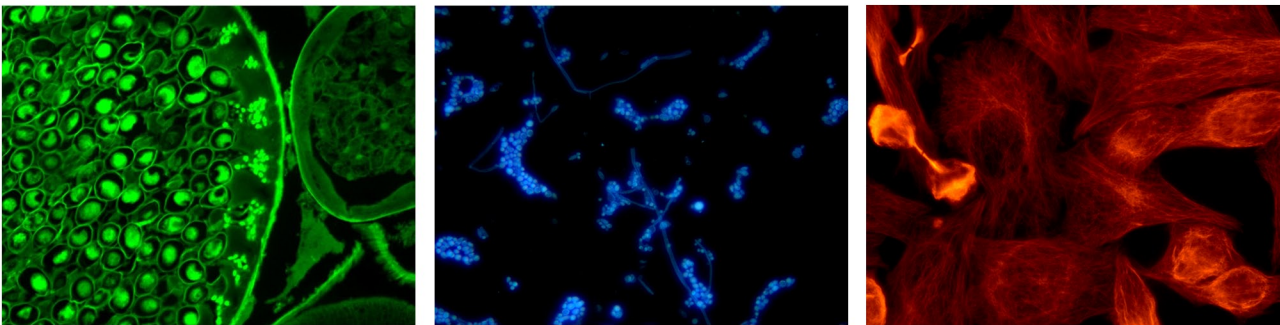


Features of Illuminator



- Three-color structure, with three wide-field fluorescent lights and one original transmitted bright field light as standard.
- Users can choose the fluorescence waveband and quantity by themselves, and the waveband switching is stable and smooth.
- Adopt LED cold light source, integrated driving power, LED excitation light source and fluorescent filter group.
- Digital display of front channel and brightness is convenient.

Performance image



Specification

Filter group	B	B BP : EX:475/30nm; DM:505nm; EM:530/40nm B LP : EX:475/30nm; DM:500nm; EM:510 nmLP
	G	G BP : EX:530/40nm; DM:565nm; EM:605/55nm
		G LP : EX:530/40nm; DM:570nm; EM:575 nmLP
	U	UV BP: EX: 375/30nm; DM:415nm; EM:460/50nm
		UV LP: EX: 355/50nm; DM:410nm; EM:420 nmLP
	Y	Y LP: EX: 560/40nm; DM:600nm; EM:610 nmLP
Excitation light source		3W LED (Y/G 5W), Adjustable brightness, visual digital display
Observation method		Fluorescence, bright field switching
Input power		DC 12V2A

Digital Display Upright  
Fluorescent  
Illuminator

