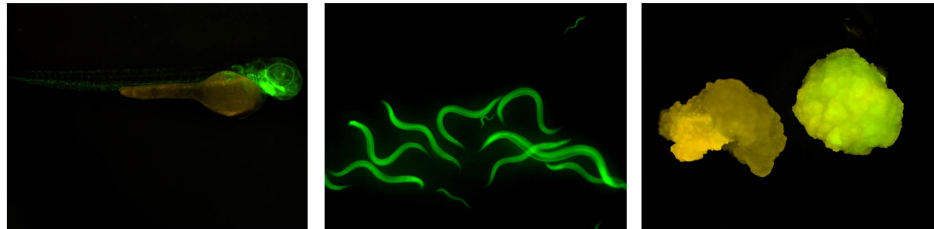


Features of Illuminator



- Two-colors structure, with two wide-field fluorescent lights and one original transmitted bright field light as standard.
- Users can choose the fluorescence waveband and quantity by themselves, and the waveband switching is stable and smooth.
- Adopt LED cold light source, integrated driving power, LED excitation light source and fluorescent filter group.
- Convenient digital display of brightness.

Performance image



Specification

Filter group	B	B BP : EX:475/30nm; DM:505nm; EM:530/40nm B LP : EX:475/30nm; DM:500nm; EM:510 nmLP
	G	G BP : EX:530/40nm; DM:565nm; EM:605/55nm
		G LP : EX:530/40nm; DM:570nm; EM:575 nmLP
	U	UV LP: EX: 355/50nm; DM:410nm; EM:420 nmLP
	Y	Y LP: EX: 560/40nm; DM:600nm; EM:610 nmLP
Excitation light source	3W LED(Y/G 5W), adjustable brightness, visual digital display	
Observation method	Fluorescence, bright field switching	
Input power	DC 12V2A	

Stereo Fluorescence Illuminator Digital Display

