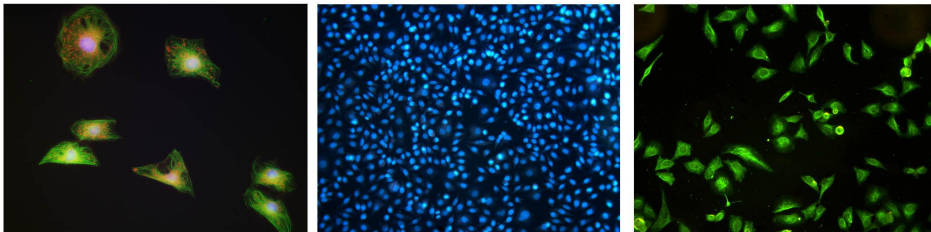


Features of illuminator



- One-stop operation of light source synchronous switching with filter groups.
- No required of external or added power supply.
- Multiple high-efficiency fluorescent bands are available for different fluorescent applications.
- No need to preheat, easy to operate.

Performance image



Specification

Filter group	B	B BP : EX:475/30nm; DM:505nm; EM:530/40nm B LP : EX:475/30nm; DM:500nm; EM:510 nmLP
	G	G BP : EX:530/40nm; DM:565nm; EM:605/55nm
		G LP : EX:530/40nm; DM:570nm; EM:575 nmLP
	U	UV BP : EX: 375/30nm; DM:415nm; EM:460/50nm
UV LP : EX: 355/50nm; DM:410nm; EM:420 nmLP		
	Y	Y LP : EX: 560/40nm; DM:600nm; EM:610 nmLP
Excitation light source	3W LED (Y/G 5W), adjustable brightness, visual digital display	
Observation method	Fluorescence, bright field switching	
Input power	DC 12V2A	

Upright single-color fluorescence Illuminator

