

MI-LED Series LED Fluorescence Illumination



MI-LED is a fluorescence illuminator in LED light source, it is used to upgrade inverted biological microscope to fluorescence microscope. Special with built-in color LED lamps and module design, the illuminator is well fit to Olympus inverted microscope for live cell. On purpose of user friendly , the products is lightweight and small volume. Combine light source, filter sets in one unit.

Features

- Compact design contains light source and filters in one unit.
- Instant on-off, no need waiting of pre-heating or cooling.
- Digital screen shows light intensity 0~100%
- Remember light intensity of each color light source.
- Light source synchronous switching with filter groups.
- No requirement of external or added power supply.
- CE, FCC, EMC, EU, ISO certified.

Applications:

Embryology
IVF
Genetics Andrology
Cell biology
Neuroscience
Sperm analysis

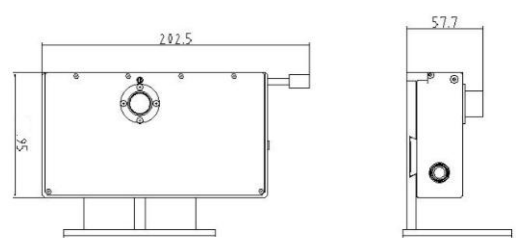


Olympus CX41



Olympus CKX53

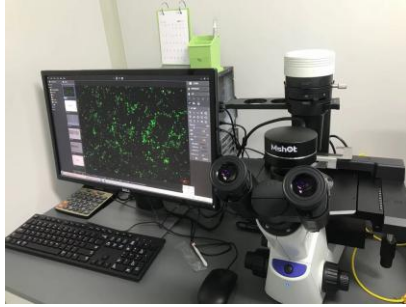
Dimension: unit mm



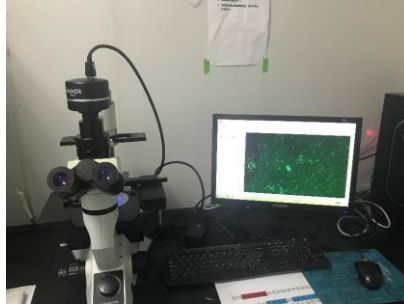
Item No.	LED lamps	Filter Groups	Compatible microscopes
MI-BG-LED	Blue and Green/yellow	Blue and Green/Yellow	Olympus CKX41 Olympus CX53
MI-BGU-LED	Blue, Green/Yellow and UV	Blue,Green/Yellow and UV	Olympus IX50/70 Olympus IX51/71 Olympus IX53/73

Standard configuration					
Model	LED lamp	Filter wavelength			Mainly Applied Fluorochrome
		Excitation filter	Dichroic mirror	Emission filter	
B	Blue	475/30nm	>505nm	530/40nm	GFP / FITC /EGFP/ Malaria diagnostic/ Alexa 488 / Cy2@ / Fluo-4 / FluorX@ / Fluoro-Jade
G	Green	530/40nm	>570nm	575nmLP	PI / EB / EH /TRITC
	Yellow	560/40nm	>600nm	610nmLP	mCherry / Texas Red / AlexaFluor 594
U	UV	355/50nm	>410nm	420nmLP	DAPI / Hoechst 33342&33258 / AMCA/AMCA-X / Alexa 350
Remark*	Olympus CX41 UV excitation only can be long-pass filter				
Light source	Blue &UV: 3W LED cold lamp for each filter group Green/Yellow: 5W LED cold lamp for each filter group				
Observation	Fluorescence Bright field & phase contrast by microscope original lighting				
Operation	Lever : B, G, UV/O				
Power control	Rota-table knob, continuously adjustable brightness				
Screen	Digital screen to show light intensity 0~100%, rememer light intensity of each color				
Input power	DC 12V 2A				
Shell	High rigid precision-cast aluminium with coating and vents				
Light baffle	Orange color plastic light baffle				
Optional lamp and filters					
LED	Filter type	Excitation filter	Dichroic mirror	Emission filter	Remark
Blue	Long-pass	475/30nm	>500nm	510nmLP	Olympus CX41 UV excitation only can be long-pass filter
Green	Band-pass	530/40nm	>565nm	605/55nm	
UV	Long-pass	375/30nm	>415nm	460/50nm	
Violet	Long-pass	400/40nm	>430nm	460nmLP	

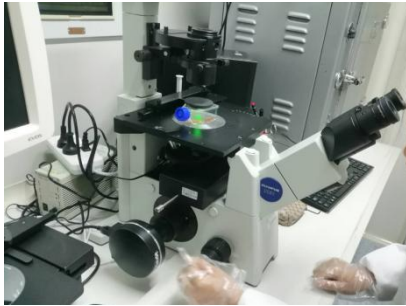
Cases



Olympus CXK53



Olympus CX41



Olympus IX51



Olympus IX71



Olympus IX73

Sample images

