

## MF-LED-CX43/CX33 Series LED Illuminator - Fluorescence and reflected bright field



MF-LED-CX43/CX33 series LED illuminator is featured with built-in color LEDs and white LED as light source. Providing friendly epi-fluorescence illuminating upgrade solution and reflected bright field lighting for Olympus CX43 microscope and Olympus CX33 microscope.

### Features

Compact design all in one unit  
Cold LED lamp for each filter group  
Continuously adjustable brightness with rotatable knob  
No need preheating or cooling, open to use  
No need external or added power supply  
Safety, environment friendly and human friendly  
One step to get fluorescence and bright field

### Applications:

Botany  
Clinical diagnose  
Immunofluorescence  
Skin and foot fungus  
Food microorganism  
Respiratory disease  
Sperm analysis  
Fluorochrome stained slide



### Single channel model

- Blue
- Royal blue
- Green
- Yellow
- UV



### Dual channel model

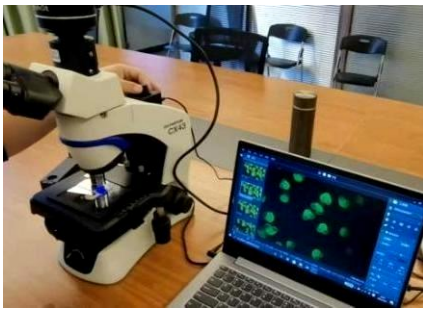
- Blue and Green



### Reflected lighting

- White cold LED

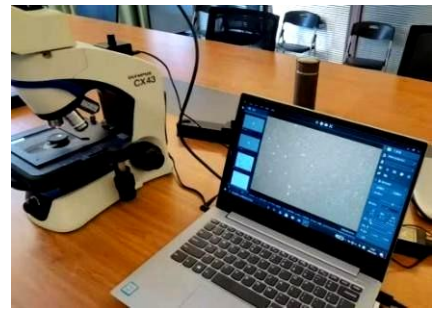
**Compatible with Olympus  
CX43 and Olympus CX33**



Single channel fluorescence

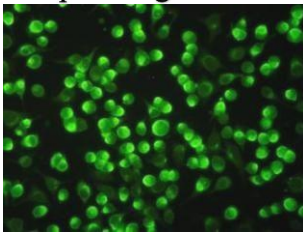


Dual channels fluorescence

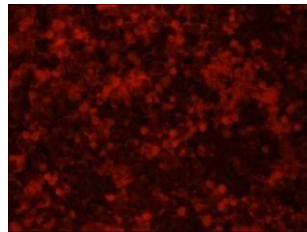


Reflected bright field lighting

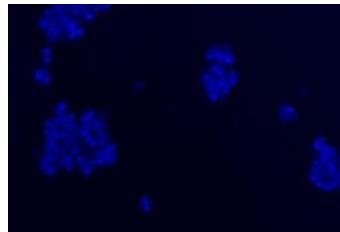
## Sample images



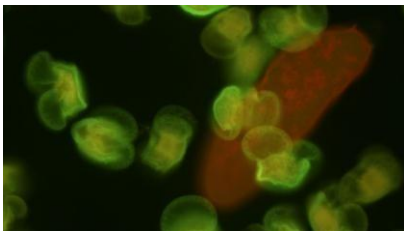
Blue LED



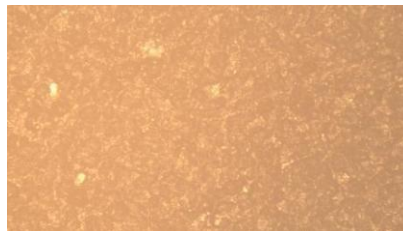
Green/Yellow LED



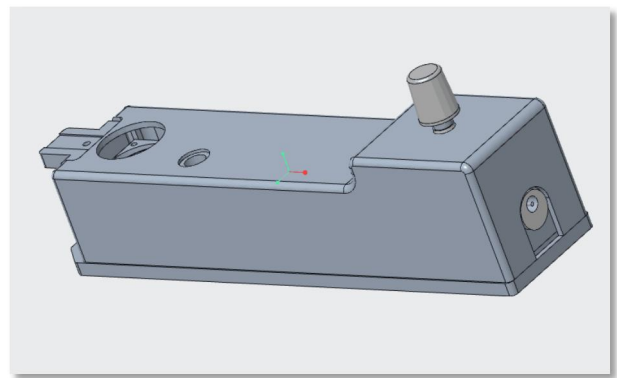
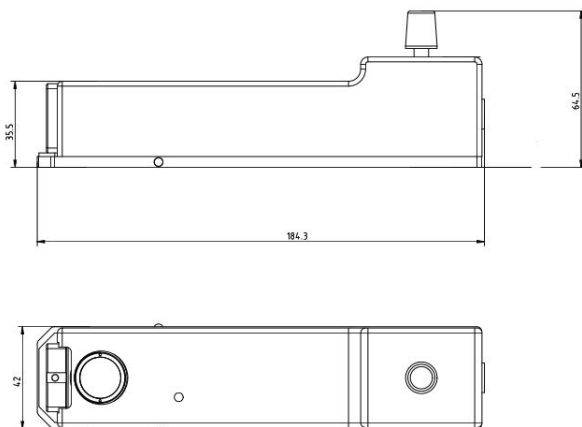
UV LED



Dual channels



Reflected white lighting - metallurgical



Dimension unit:mm

## Models

Items	Channels	LED lamps	Filter Groups
MF-B-LED-CX43/CX33	Blue	Blue	Blue
MF-RB-LED-CX43/CX33	Royal blue	Royal blue	Royal blue
MF-G-LED-CX43/CX33	Green	Green	Green
MF-Y-LED-CX43/CX33	Yellow	Yellow	Yellow
MF-UV-LED-CX43/CX33	UV	UV	UV
MF-BG-LED-CX43/CX33	Blue & Green	Multi-color	Dual channel: BG
MR-LED-CX43/CX33	White	White	Beamsplitter

## Specification

Single channel models					
Model	LED lamp	Filter wavelength			Recommend applied fluorophores
		Excitation	Dichroic mirror	Emission	
B	Blue	475/40nm	>500nm	535/45nm	GFP / FITC /EGFP/ Malaria diagnostic/ Alexa 488 / Cy2@ / Fluo-4 / FluorX@ / Fluoro-Jade
RB	Royal blue	420-480nm	>500nm	510nmLP	Tuberculosis Diagnostic
G	Green	525/45nm	>560nm	595/60nm	PI / EB / EH
Y	Yellow	560/40nm	>600nm	610nmLP	mCherry / Texas Red / AlexaFluor 594
UV	UV	350/50nm	>400nm	460/50nm	DAPI/Alexa 350/Hoechst 33342&33258 /AMCA/ AMCA-X
Light source		Blue & Royal blue & UV: 3W LED lamp for each group of filter Green & yellow: 5W LED lamp for each group of filter			
Observation		Fluorescence Bright field & phase contrast by microscope original lighting			
Operation		Push-fluorescence, Draw-bright field			
Power control		Rota-table knob, continuously adjustable brightness			
Input power		12V/2A			

Dual channels model					
Model	LED lamp	Filter wavelength			Recommend applications
		Excitation	Dichroic mirror	Emission	
BG	Multi-color	450-490/555-590nm	496/595nm	500-540/600-665nm	Dual fluorescence dyes slide
Light source		5W LED for one group of filter			
Observation		Fluorescence Bright field & phase contrast by microscope original lighting			
Operation		Push-fluorescence, Draw-bright field			
Power control		Rota-table knob, continuously adjustable brightness			
Input power		12V/2A			

Reflected white lighting model			
Model	LED lamp	Filter wavelength	Recommend applications
MR	White	Beamsplitter	Simple metallurgical
Light source		3W LED for one group of filter	
Observation		Reflected epi-illuminating bright field	
Operation		Push: Epi-illuminating, Draw:No light	
Power control		Rota-table knob, continuously adjustable brightness	
Input power		12V/2A	